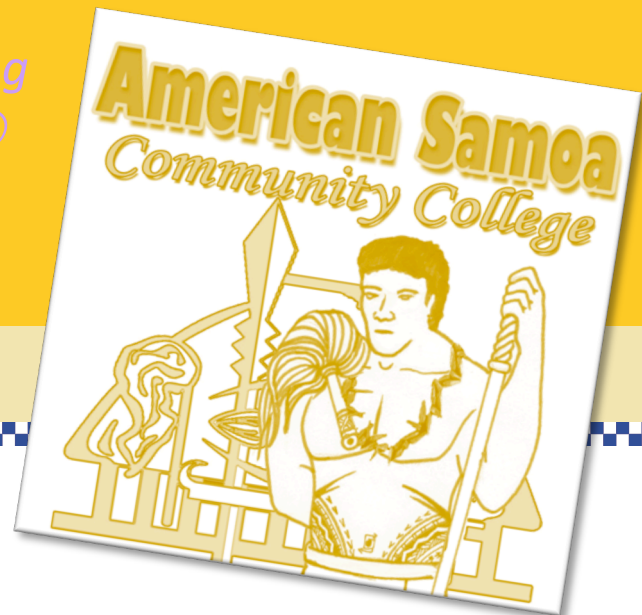


411 Newsletter

*Never get so busy making a living
that you forget to make a life ☺*



Spring 2013 Mar 04-08, 2013

Campus News

- 2/25 Deadline for Change of Grades for 2012 Fall
- 3/4-3/7 Mid-Term Examinations
- 3/11-315 SPRING BREAK
- 3/25-4/12 Withdrawal Period to Receive a "W/F" or "W/NP"

SSS Announcements

Scholarship & Internship Opportunities...pg.4

Library Information

ASCC Press Release

Spring Break!!!

Spring Break is right around the corner ☺

Before you start thinking about relaxing on the beach, you're going to need to get through this week. The assignments, tests, papers etc., you've completed thus far, will determine how you've been faring this semester. If you haven't been doing too well, you shouldn't fret just yet. There is still ample time for you to pick up your grade. Think about what you want to accomplish by the end of the semester. Set some short-term goals that you could work towards now. Keep in mind that hard work always pays off! Use this time to reflect on any bad habits you may have picked up with your academics, and learn from them. Now is the time to start making those necessary changes, because before you know, its time for Finals, and by then, it'll be too late to change your grade ☺

BEST OF LUCK WITH YOUR MIDTERMS ☺

Announcements

If you would like to make announcements via the 411 Campus Newsletter, please see Deidra Saelua at the S.L.A.Center, or you can email: d.saelua@amsamoa.edu or call 699-9155 ext.461





DIVISION OF STUDENT SERVICES

We here at Student Services are dedicated to providing each student with quality services and assistance in any of our respective areas.

Counseling

S.L.A. Center

>DIVERSITY & TUTORIAL COUNSELING

If you are experiencing trouble with your academics, feel free to stop by the Diversity & Tutorial Counselors office-Annie Panama, or email her at a.panama@amsamoa.edu or ext.326.

>CAREER COUNSELING

Students seeking assistance in resume writing or job coaching are encouraged to visit the Career Counselor-Feleni Petelo or contact her via email:

f.petelo@amsamoa.edu or via interoffice extension: 362

If you have any problems seeing any of the counselors in person, you can email them, or schedule an appointment with Ms. Sina Hudson at the Dean of Student Services

HOURS: M-F 8:00-3:30

Students who may need tutoring through out the semester are highly encouraged to visit the SLACenter.

Tutorials are FREE and appointments are made with Mrs. Lydian Tinali: l.tinali@amsamoa.edu, or any of the staff members at the SLACenter.

If you have any additional questions please stop by the SLACenter and talk to Lydian Tinali, Isaako Amosa, or Dacia Taleni, or call 699-9155 ext.479.



>CACGP OUTREACH COORDINATOR

If you would like to setup an outreach session for a local high school, village, community, or church organization to discuss transitioning to college and Financial Aid, stop by the SLA Center and see Mrs. Mana'o Satele-Vaovasa, or you can email her at m.vaovasa@amsamoa.edu, or via interoffice extension: 478.

>CACGP/SLA Center Point of Contact

If you are having trouble reaching any of the SLA Center staff, you are welcome to make an appointment with Mrs. Deidra Saelua, or email d.saelua@amsamoa.edu, or call 699-9155 x461.

Tutors of the Month

English

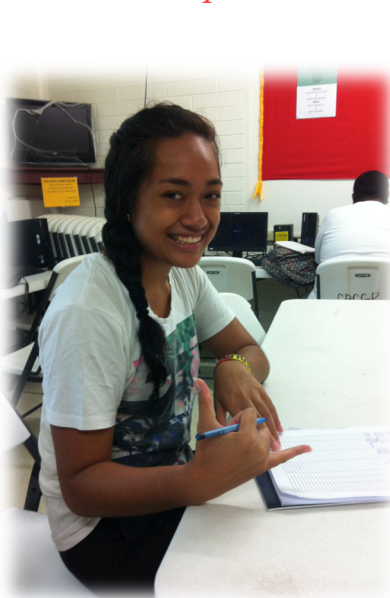
Math

Tala Ropeti

Witt Mariner

Ella-Monique Misa

Lorilei Teofilo



*Congratulations Ladies on a Job Well Done!!!
Keep up the good work 😊*

VETERANS AFFAIRS



VA Student Services/ Student Employment (Non-Pell) Coordinator

IMPORTANT ANNOUNCEMENT:

All approved VA students receiving Educational 'direct' deposit payments through Bank of Hawaii (BoH) should contact BoH for further information. If you're switching banks for direct deposits, and no longer interested in staying or banking with BoH...PLEASE ensure that the Department of Veterans Affairs is notified with your new bank account information as soon as possible. The change is not automatic.

For more information contact Mrs. Fualau Rosie Tago Lancaster @ 699-9155 x426. Email: f.lancaster@amsamoa.edu.

REMINDER: ZERO TOLERANCE POLICY

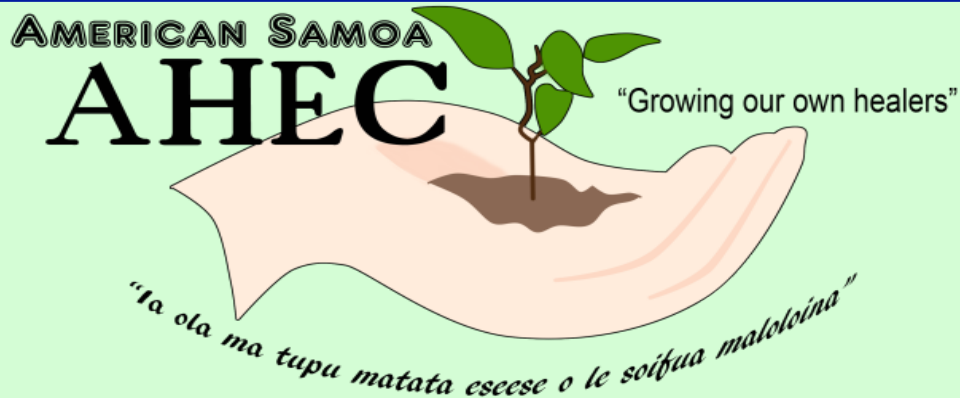
Students! Please know and understand that this policy is very crucial.

Zero Tolerance Policy:

“As with any community educational environment certain policies are established to ensure health and safety of all the students and employees of the institution.

ASCC defines zero tolerance as: *the strict application of consequences regarding violation of ASCC’s rules on weapons, explosives, fighting, drugs, and alcohol. If a student is found to have violated any of the aforementioned rules, then the consequences shall be applied without exception.*”

If you have any questions regarding this policy, please refer to the ASCC Catalog (hard copy or ASCC website), or see the Dean of Student Services.



Date: March 19, 2013

Time: 12:30 pm

Location: Room A-17

*Any ASCC Students interested in Health and Health Occupations.
We Invite You To Attend.*

Contact for more information:

Dr. Daniel Chang: 699-9155 ext. 397

ASAHEC Office: 699-1587

Email: s.samoa@amsamoa.edu

.scholarships.

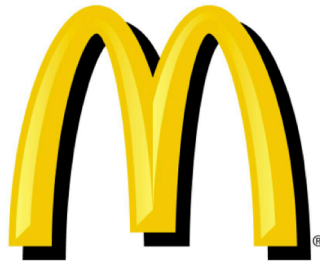
Don't miss out on a great opportunity to receive extra cash for school!!

Extended Deadline!

IN-HOUSE SCHOLARSHIPS

SGA Saili Le Atamai	\$500
Presidential Merit Scholarship	\$500

Applications are now available. Deadline to submit your application is **March 15, 2013!** Stop by the Dean of Student Services offices to pick up an application!!



McDonald's American Samoa Scholarship Awards

Need help with college tuition? McDonald's American Samoa proudly announces the following scholarship awards for the 2013-2014 academic year:

- **Four (4) \$1,200 Scholarship Awards to qualified applicants to attend the American Samoa Community College (ASCC)**
- **One (1) \$8,000 Scholarship Award to a qualified applicant who has completed the required courses for an AA degree at ASCC and is continuing his/her degree program at an accredited U.S. college/university**

Applications are available at McDonald's Head Office, Nu'uuli, beginning **Feb 11, 2013, between 2pm and 4pm Monday - Friday.**

Deadline for turning in applications is Friday, April 19, 2013, at 4pm at McDonald's Head Office.

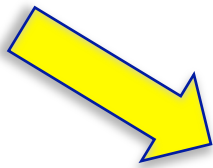
For more information, please contact Evelyn Gebauer at 699-8699 or Dolores T Galeai at 699-1520.

PREL Teacher Scholarship

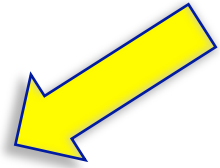
Applications are now open for the PREL Teacher Scholarship for Fall 2013.

Scholarships are awarded to students who are enrolled in a teacher preparation program. Applicants must reside in American Samoa, the Commonwealth of the Northern Marianas Islands (CNMI), the Federated States of Micronesia (FSM), Guam, the Republic of the Marshall Islands (RMI), or the Republic of Palau, be a 2nd, 3rd, or 4th year student at an accredited college or university, be a student in good standing, and intend to teach in a school in the U.S.-affiliated Pacific.

**Please see attached application for details.*



Great Opportunity!!!



Applications are now being accepted for the **Fall 2013 Capital Semester** program in Washington, DC. Students who may be interested in spending a semester interning and earning credit in the nation's capital, should apply!

Students will earn 12 credits and are guaranteed an internship in their area of interest. Students are encouraged to apply for the early application deadline of **March 1** to receive priority scholarship consideration and a **5% tuition discount**.

There are generous scholarships available with preference given to ASGA students. We value the participation of student government officers in our programs.

More information on our programs may be found at www.DCinternships.org/CS. If you have any additional questions, please contact Ms. Dana Faught at dfaught@tfas.org or 202.986.0384.

Paid Marine Science Summer Internships in Hawaii PIFSC Young Scientist Opportunity

The PIFSC Young Scientist Opportunity (PYSO) is a collaborative program between PIFSC and the Joint Institute for Marine and Atmospheric Research (JIMAR) at the University of Hawaii at Manoa. This program offers qualified participants professional scientific research experience and formal training opportunities tailored to meet their educational and professional goals and interests.

For more information, please see: <http://www.pifsc.noaa.gov/pyso/>

****Note:** this internship does not provide travel or housing support, however if you are accepted into this program travel support can be applied for through the ASCC LSAMP program. Please see Kelley Anderson Tagarino or Victor Ualesi for more information on ASCC LSAMP program.

Student Support Services (SSS)

We offer **FREE** tutorial services, academic and personal counseling
for all SSS active & alumni participants

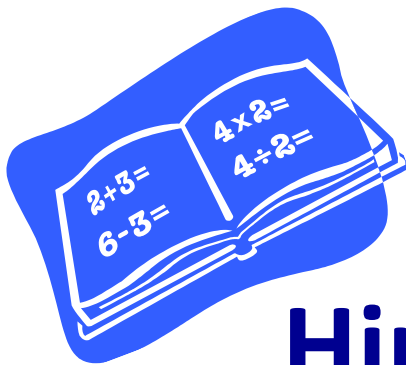
Tutorial/Computer Lab opens 7:30-3:30pm

Tutorial Services-

ELI & Remedial Math students interested in tutorial sessions, visit SSS Lab (ELI Building) or contact the SSS Tutor Coordinator-Amber Fuaga, 699-9155 ex. 415 or email a.fuaga@amsamoa.edu, *please see attached tutorial schedule

Counseling Services-

If you need Academic & Personal counseling or any counseling services to improve your financial aid and economic literacy, or just need someone to talk to -*Please contact* Hipa Neria, 699-9155 ex. 363 or email h.neria@amsamoa.edu



Hiring Paid Tutors

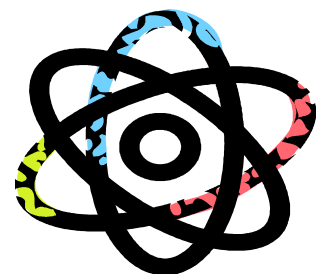
The ASCC LSAMP Program is pleased to announce that we will be hiring tutors in STEM areas (Science, Technology, Engineering, and Math) for the 2013 Spring semester. If you would like to make some extra cash and are willing to share your talent to help others, please see the contact information below to pick up an application.

Kelley A. Tagarino:

Office Phone: 684-699-9155 ext: 356
Email: K.Anderson@amsamoa.edu
Office: A-6 (Science building)

Victor T. Ualesi:

Office Phone: 684-699-9155 ext: 451 or 321
Email: v.ualesi@amsamoa.edu
Office: Academic Affairs



LIBRARY HOURS

Monday-Friday 7:30am-4:00pm

ASCC Library Catalog Online Search

Are you looking for a specific book at the library, but have no idea where to find it? Well, not to worry, our online library catalog search is now available. You can search for the call number on the college website www.amsamoa.edu and click on the "Search Library Catalog" link located on the left hand side of the website. For more information concerning this online service contact us at 699-9155 Ext: 418 or 330

How to make a Library Card



Stop by at the ASCC Library and make a library card!
Documents needed for a library card are:

1. Valid Local Photo ID or Passport
2. Class schedule
3. Social Security Card

Notice: First time library cards are free of charge, but \$7.00 for a Lost Card.

Are you looking for information about Samoa and the Pacific Islands for your research paper?

The Library Special Collection Room has information that you need!

Hours: 7:30am - 4:00pm (Mon-Fri)

Check it out and find out more about the Samoan Islands, as well as other Pacific Islands!!!

NEED A WORD OF ENCOURAGEMENT???
Join S.W.A.T (Students With A Testimony)

For more information please contact any one of the club officers:

Tafifua Lemutu: 731-7329

Tafao Faoa: 770-2132

Pau Sauvao: 256-3453

We're looking forward to meeting you ☺

**ASCC Press Release
Tuesday, February 19, 2013**

**ASCC Student Support Services
Promotes Plantation Skills for TRIO
Day**

By James Kneubuhl, ASCC Press Officer

Students receiving assistance from the Student Support Services (SSS) division at the American Samoa Community College (ASCC) spent several hours during the President's Day holiday this week learning basic plantation skills as part of TRIO Day, a nationwide activity during which the eight federally funded educational opportunity outreach programs that make up TRIO are encouraged to perform community services as a way to give back to their respective communities. SSS Director Repeka Alaimoana-Nuusa explained that given American Samoa's move towards modernization in most households, many of today's youth have never had the experience of planting or harvesting food, so plantation activity represents a way of familiarizing students with the agricultural process as well as instilling respect for the natural environment.

"Most of us understandably want to appear upwardly-mobile nowadays," said Alaimoana-Nuusa, "so an activity like plantation work is sometimes looked down upon, but we'd like our students to realize the connection between a healthy environment and healthy eating." Approximately six months ago, SSS students planted an abundant crop of manioka (also referred to as tapioca) in the SSS garden on the upper ASCC campus, which meant that many of the plants have reached the stage for harvesting. Monday's activities included harvesting and cleaning the manioka root, planting new stalks, clearing overgrowth, and finally enjoying a lunch that included some of the manioka the students had just harvested.

The Federal TRIO Programs consist of eight federal outreach and student services programs designed to

identify and provide services for individuals from disadvantaged backgrounds. Administered, funded, and implemented by the United States Department of Education. TRIO programs are targeted to serve and assist low-income individuals, first-generation college students, and individuals with disabilities to progress through the academic pipeline from middle school to post-baccalaureate programs. Of the programs under the TRIO umbrella, ASCC hosts Student Support Services, which follows the specific mandate of helping low-income and first-generation students, including those with disabilities, to succeed in and graduate from college. Participants receive tutoring, counseling, and remedial instruction in order to achieve their goals of college completion. The SSS strives to increase the college retention and graduation rates of its participants and facilitate the process of transition from one level of higher education to the next. A fixture at ASCC for more than 20 years, the SSS is funded to serve 200 participants from the College Accelerated Preparatory Program (CAPP).

Besides Director Alaimoana-Nuusa, the SSS staff includes Counselor Hipa Neria, Retention Specialist Hope Ropeti, Lead Tutor Amber Fuaga and Administrative Assistant Charmaine Faleaana. Every semester, the SSS holds a New Student Orientation, during which they recruit participants from the CAPP population. Once students successfully exit the CAPP program, these students are no longer active members of SSS, although the program will still assist and track them while at the college level. Eligible students must be US citizens or nationals, low Income and receiving financial aid, first generation college students within their family, and/or have a disability.

Since the program includes a public service component, in spring 2010, the SSS launched a plantation project in a lot behind the former faculty housing on the ASCC upper

campus. The project aimed to, first, to provide an opportunity for participating SSS student to discover the numerous food resources available in American Samoa; second, to realize and value students' contributions toward community collaborative efforts in food preservation; and third, to inspire young people to pursue career options in the field of agriculture. The students gained experience in land preparation, farming methods, procedures and crop maintenance. SSS collaborated with the Land Grant Agriculture Extension Program in obtaining crops that are now grown on the plantation.

More information on the SSS and their services can be found at:
<http://www.amsamoa.edu/academicssupportsss.htm>



**ASCC Press Release
Friday, March 01, 2013**

**UCEDD Hosts Child Mental Health
Training**

*By James Kneubuhl, ASCC Press
Officer*

Why is it important for parents, caregivers, and professionals to know about children’s mental health? The University Center for Excellence on Developmental Disabilities (UCEDD), an advocacy organization hosted by the American Samoa Community College (ASCC), addressed this question and more during its Child Mental Health Training held in late February. Several dozen Special Education Resource Specialists and counselors from the public and private schools participated in the training, which featured presentations from both the UCEDD and the Department of Human and Social Services (DHSS) Pua Center.

“The main accomplishment of this training was that it create a bridge for open communication between the Special Educations’ Resource Specialists and counselors and the government leading agency that deal with mental health issues in general for children,” said UCEDD Community Trainer Paulia Pa’o-Pelenato. “We were also able to create and agree on a flow chart of responsibilities for serving a child with mental health issues if they were to be referred to a Resource Specialist during school hours.”

The morning training began with a two-part presentation the DHSS Pua Center, the government agency that provides services on island for people with mental health concerns. Mrs. Masele Iafeta and Ms. Tepatasi Vaina of the Pua Center presented on issues regarding child mental health and the importance of teachers and counselors working

together with the parents/families of these children to ensure they receive the necessary and correct services. During the UCEDD’s presentation, Pa’o-Pelenato explained that mental health disorders in children are more widespread than most adults believe. Instructors and counselors in our schools especially need to be aware of mental health issues because they are often among the first people to see that a child may be experiencing a problem. “By understanding the nature of mental health disorders, school personnel can better plan programs that meet their students’ needs and build a positive environment,” she said.

Beginning with definition of mental health as “a level of psychological well-being in which an individual realizes his/her own abilities to cope with the normal stresses of life, work productively and fruitfully, and is able to make a contribution to his/her community,” Pa’o-Pelenato cautioned that children with mental health concerns who do not have a positive environment or significant relationships may show symptoms of depression while evidencing a failure to thrive. The stigmas surrounding mental health issues not only subject the child to negative attitudes, but can also discourage their families from getting them the help they need.

Attention-deficit hyperactivity disorder (ADHD) is one of the most common child mental health disorders, affecting 3 to 5 % of school-age children. Children with ADHD face a challenge controlling impulsivity and inattention, but teachers can learn strategies for effectively channeling these traits for the benefit of both the child with ADHD and the class as a whole. Children may also be struggling with Down Syndrome, which severely

compromises language and communication abilities, or Tourette Syndrome, which can be very generally described as a state of uncontrollable nervous reaction, or other Sensory Processing or Pervasive Developmental Disorders which interfere with learning.

Pa’o-Pelenato emphasized that through early intervention and especially through creating an emotionally healthy environment, children facing these challenges can still thrive within a classroom situation. Further information on helping children with mental health issues is available from the UCEDD, who can be contacted through ASCC at 699-9155, or by email at ucedd@amsamoa.edu. Another resource is the Pua Center at 699-4155.



Ever wondered what's below
the water? Want to learn more
about what you see down
there?



Come explore your
Local marine resources!

(The photo on the left
shows MSC280 students
after their research has
been finalized.)

(On the right, you see a
MSC 280 student
collecting data in the field
for Marine Science Special
Projects.)



For more information stop by the Marine Science Coordinator's office in A-6 (small room next to classroom A5).

Mrs. Kelley Anderson Tagarino
Marine Science Coordinator

k.anderson@amsamoa.edu or kelleyand@gmail.com

Cell: 252-2310

**ASCC Press Release
Friday, March 01, 2013**

**MOP Student Gives
Community Talks on Coral
Reef Threats**

(PRESS RELEASE)

“Reefs are under attack by multiple stressors,” said Marine Science student Valentine Vaeoso, “and what should we do about this? We step in and we take action, even in the smallest way.” This semester, Vaeoso, a student from the American Samoa Community College (ASCC) in the Marine Option Program (MOP) will give several talks to school and community groups on some of the major threats in reefs worldwide, including those in American Samoa. “My main focus of is to give back to the community what I’ve learned through the Marine Option Program,” she explained.

The talks will emphasize how threats to the reefs of American Samoa, which are expected or now being seen, increase coral death . Some of these threats include coral disease; coral bleaching due to the increase in water temperature which turns coral white; and crown-of-thorn starfish (alamea) invasions which feed on coral, thereby decreasing coral cover. In 1970, American Samoa experienced an invasion of crown-of-thorns starfish which damaged 80 percent of the reefs. Slowly our reefs have come back from that event, but there are still threats which have slowed coral growth, and we are currently experiencing a rapid increase in crown-of-thorns

starfish population.

Vaeoso’s talks will include a training on how to identify some common coral diseases that occur in American Samoa. She hopes to encourage students and community members to report these events or signs if they come across them while in the ocean. “This is important because we can better prepare for potential problems if these warning signs are reported,” she said. “This could prevent an outbreak that could wipe out an entire population of coral. We need to maintain a healthy and well managed environment for coral. If we lose too much coral, we will eventually lose our reef fish and will be forced to change our fishing grounds.”

A former student at Uifatali Peter Coleman Elementary School and Samoana High School, Vaeoso says her involvement with marine science has kindled a passion for study of the ocean and science in general. “I was interested in science before coming to ASCC”, she explained “but I wasn't very active in this subject because it was difficult to comprehend and hard to retain. However, science has now become very interesting to me and worth the challenge.” After graduating from ASCC, she plans to pursue a bachelor degree in Marine Science/Marine Biology, and hopefully continue on to study for a Masters degree, with the goal of one day becoming a marine biologist or coral biologist.

“Being an outdoor kind of person with much curiosity

about nature, I have always enjoyed learning about animals interaction with their environment”, Vaeoso reflected. “My love for the ocean came late in life, mainly because I lived away from the coast. But since my high school marine science teacher took our class snorkeling at Fagaalu, I’ve enjoyed going in the water and gaining knowledge of our marine ecosystems. The first time I went snorkeling, it was breath-taking to view such amazing scenery and various marine organisms underwater. Marine Science is a great field of study with many opportunities that anyone can benefit from.”

If you have questions or would like to request a talk on this topic for students or community members please contact Kelley Anderson Tagarino (ASCC Marine Science Coordinator) at 699-9155 x 356 or 252-2310 for more information.



S.L.A CENTER TUTORIAL SCHEDULES

MATH

Hours	Monday	Tuesday	Wednesday	Thursday	Friday
8:00-9:00 am	Iupelisiliva Edwards	Ulysses Hopkinson	Iupelisiliva Edwards	Ulysses Hopkinson	Iupelisiliva Edwards
	Ulysses Hopkinson		Ulysses Hopkinson		Ulysses Hopkinson
9:00-10:00 am	Witt Mariner		Witt Mariner		Witt Mariner
	Iupelisiliva Edwards	Iupelisiliva Edwards	Iupelisiliva Edwards	Iupelisiliva Edwards	Iupelisiliva Edwards
	Ulysses Hopkinson		Ulysses Hopkinson		Ulysses Hopkinson
	Witt Mariner		Witt Mariner		Witt Mariner
10:00-11:00 am	Grace Felise	Iupelisiliva Edwards	Grace Felise	Iupelisiliva Edwards	Grace Felise
	Witt Mariner	Lorilei Teofilo	Lorilei Teofilo	Lorilei Teofilo	Witt Mariner
10:30	Lorilei Teofilo		Witt Mariner		Lorilei Teofilo
11:00-12:00 pm	Grace Felise	Grace Felise	Grace Felise	Grace Felise	Grace Felise
	Lorilei Teofilo	Lorilei Teofilo	Lorilei Teofilo	Lorilei Teofilo	Lorilei Teofilo
	Witt Mariner		Witt Mariner		Witt Mariner
12:00-1:00 pm	LUNCH	LUNCH	LUNCH	LUNCH	LUNCH
1:00-2:00 pm	Joyce Fou	Grace Felise		Grace Felise	Joyce Fou
		Joyce Fou		Ulysses Hopkinson	
		Ulysses Hopkinson		Witt Mariner	
		Witt Mariner			
2:00-3:00 pm	Iupelisiliva Edwards	Iupelisiliva Edwards	Iupelisiliva Edwards	Iupelisiliva Edwards	Iupelisiliva Edwards
	Joyce Fou	Joyce Fou		Witt Mariner	Joyce Fou
		Witt Mariner			
3:00-3:30 pm	Joyce Fou	Iupelisiliva Edwards		Iupelisiliva Edwards	Joyce Fou
		Joyce Fou		Witt Mariner	
		Witt Mariner			

ENGLISH

Hours	Monday	Tuesday	Wednesday	Thursday	Friday
8:00-9:00 am	Maria Magalasin	Henrietta Pulou	Maria Magalasin	Herietta Pulou	Henrietta Pulou
	Tala Ropeti	Tala Ropeti	Uisaina Taufaasau	Tala Ropeti	Maria Magalasin
	Uisaina Taufaasau	Tonya Tuigamala		Tonya Tuigamala	Uisaina Taufaasau
9:00-10:00 am	Maria Magalasin	Tala Ropeti	Maria Magalasin	Tala Ropeti	Maria Magalasin
	Tala Ropeti				Tala Ropeti
9:30-10:30		Pearl Sheck		Pearl Sheck	
10:00-11:00 am	Henrietta Pulou	Tala Ropeti	Henrietta Pulou	Tala Ropeti	Henrietta Pulou
	Ella-Monique Misa		Ella-Monique- Misa		Ella-Monique Misa
11:00-12:00 pm	Mary Cheung-fuk		Mary Cheung-fuk		Maria Magalasin
					Mary Cheung-fuk
	Staff	Ella-Monique Misa	Staff	Ella-Monique Misa	Staff
		Mary Cheung-fuk		Mary Cheung-fuk	
		Tonya Tuigamala		Tonya Tuigamala	
12:00-1:00 pm	LUNCH	LUNCH	LUNCH	LUNCH	LUNCH
1:00-2:00 pm	Tonya Tuigamala	Henrietta Pulou	Tonya Tuigamala	Henrietta Pulou	Tonya Tuigamala
	Uisaina Taufaasau	Uisaina Taufaasau	Uisaina Taufaasau	Uisaina Taufaasau	Uisaina Taufaasau
2:00-3:00 pm	Henrietta Pulou	Uisaina Taufaasau	Henrietta Pulou	Maria Magalasin	Henrietta Pulou
	Pearl Sheck	Maria Magalasin	Uisaina Taufaasau	Pearl Sheck	Uisaina Taufaasau
		Pearl Sheck	Pearl Sheck		Tala Ropeti
3:00-3:30 pm	Henrietta Pulou	Uisaina Taufaasau	Pearl Sheck	Pearl Sheck	Henrietta Pulou
	Pearl Sheck	Pearl Sheck			Tala Ropeti
	Tonya Tuigamala				Tonya Tuigamala

ALL OTHER SUBJECTS

Hours	Monday	Tuesday	Wednesday	Thursday	Friday
8:00-9:00 am	Staff	Aneta Afeleti	Sinaretta Schwenke	Aneta Afeleti	Sinaretta Schwenke
				Sinaretta Schwenke	
9:00-10:00 am	Staff	Aneta Afeleti	Sinaretta Schwenke	Aneta Afeleti	Sinaretta Schwenke
				Sinaretta Schwenke	
10:00-11:00 am	Paul Saulo	Aneta Afeleti	Paul Saulo	Aneta Afeleti	Paul Saulo
			Sinaretta Schwenke	Sinaretta Schwenke	Sinaretta Schwenke
10:30		Paul Saulo		Paul Saulo	
11:00-12:00 pm		Aneta Afeleti	Sinaretta Schwenke	Aneta Afeleti	Sinaretta Schwenke
		Paul Saulo		Paul Saulo	
				Sinaretta Schwenke	
12:00-1:00 pm	LUNCH	LUNCH	LUNCH	LUNCH	LUNCH
1:00-2:00 pm	Staff	Aneta Afeleti	Sinaretta Schwenke	Aneta Afeleti	Sinaretta Schwenke
				Sinaretta Schwenke	
2:00-3:00 pm	Paul Saulo	Aneta Afeleti	Paul Saulo	Aneta Afeleti	Paul Saulo
		Paul Saulo		Paul Saulo	
3:00-3:30 pm	Paul Saulo	Aneta Afeleti	Paul Saulo	Aneta Afeleti	Paul Saulo
		Paul Saulo		Paul Saulo	

S.L.A CENTER ANNOUNCEMENTS:

Tutorials are done on a walk-in, referral, or signing up with one of the peer tutors, basis. You may request group tutorials or one on one sessions.

ENGLISH: All papers submitted for editing must be turned in at least 24 hours before it's due.

S.L.A Center hours will be extended to 4:00pm during Finals Week.

If you have any additional questions, please see one of the SLA Center Staff, or you can reach them at ext. 479.

What are your plans for Spring Break?

I'm just going to be working. I wanted to go to Apia, but duty calls ☺

Maynard

RELAX!!! The thought of NOT worrying about school feels sooo good!

J.D

I'm looking for a sponsor to take me somewhere...anywhere ...PLEASE, lol ;)

Party 'til the sun goes down...wake up and do it all over again!!

Adrienne

Start working on future assignments....NOT! Probably nothing...just relax ☺

Michael

SLEEP, SLEEP, and more SLEEP.

Athena S.

STUDENTS CORNER

Word of the day

zealous \zel-uh s\
adjective:

ardently active, devoted, or diligent;

They are inspired by zealous organizations to monitor parental drinking.

Fun Facts

- 1) You share your birthday with at least 9 million people!
- 2) Michael Jordan makes more money from Nike annually than all of the Nike factory workers in Malaysia combined!
- 3) Nutmeg is extremely poisonous if injected intravenously.
- 4) The strongest muscle in the body is the tongue.
- 5) You can't kill yourself by holding your breath.



How people dressed in the 80's



How college girls THINK people dressed in the 80's



Thought for the day

Life is too short to spend time with people who suck the happiness out of you ☺