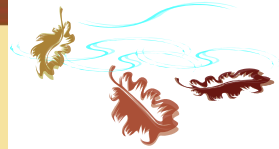
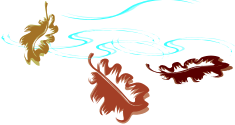


4

AMERICAN SAMOA COMMUNITY COLLEGE DIVISION OF STUDENT SERVICES

"Connects Students to What is Happening On Campus"

November 8, 2010 to November 12, 2010



Quote of the week:

"There are many wonderful things that will never be done if you do not do them.."

By: Charles D. Gill

MISS ASCC PAGEANT 2010-2011



Teleaitala I'atala Fuata
Sponsored By: Segaula



Reining Miss ASCC 2009-2010
Miss Lalomoana Vaeo



Ilaisa Silo'i
Sponsored by: New Generation



Veronica Jessica Parker
Sponsored By: 2 Wong Foo



Ana Tiu Tautu
Sponsored By: All Saints



Maelise Vai
Sponsored By: Humble



Toefuataina Taai
Sponsored By: Just Be COOL



Sinaretta Schwenke
Sponsored By: TSK



Lila Tuilagi
Sponsored By: New ERA

Courtesy of Student Services Division
Counseling Services
Fall 2010

2010 Fall Semester Calendar

October 25-November 12: Withdrawal Period to receive a "W/F" or "W/NP"
November 11: HOLIDAY – Veterans Day
November 15 – December 10: 2011 Spring & Summer Priority Registration
November 25: HOLIDAY – Thanksgiving
November 29 – December 2: ELI & Development Math FINAL EXAMINATION
December 3: Last day to Complete Withdrawal from ASCC
December 3: Instructions End!!

ASG Scholarship / Loan Applications Available NOW:

Deadline to submit: November 26, 2010

Phi Theta Kappa

The Phi Theta Kappa Honor Society at American Samoa Community College will be having a 3-week CAN and PENNY DRIVE. And ALL Proceeds will go to the Fatuoaiiga "HOPE HOUSE" for this year's THANKSGIVING DONATION.

PTK members will be distributing jars around the community to help Fatuoaiiga "HOPE HOUSE" have a Happy Thanksgiving. Starting next week we will be asking the local businesses to ehlp sponsor their PENNY DRIVE by placing them in their stores. The following week on Nov. 8th, there will be tables set up on campus at ASCC.

The tables will be accepting CAN FOODS and PERSONAL PRODUCTS. Please contact PTK President Amber Fuaga at 252-0531 for any questions.



Courtesy of Student Services Division
Counseling Services
Fall 2010

EVENING CLASSES!

For your convenience, the following rooms are available after hours:
Monday – Thursday; 4pm – 7:30pm

- 1) Computer Lab
- 2) Library
- 3) Student Learning Assistance Center (SLAC)

Note: The following services are also available at the Student Learning Assistance Center, located next to the Cafeteria.

- 1) Counseling
- 2) Tutorials
- 3) Xerox Services

Note: Must have student ID to pick up bus pass for evening classes ONLY!!

STUDENT GOVERNMENT ASSOCIATION

November:

- | | |
|--------------|--|
| 9 | Guest Speaker@ Lecture Hall (Tutoring/Transfer/Zero Tolerance) |
| 9 | Ava Ceremony@ Fale Samoa |
| 11 | HOLIDAY (Veteran's Day) |
| 13 | Miss ASCC Pageant 13 th Gym 7pm – 10:30pm |
| 15 – Dec. 10 | 2011 Spring & Summer Priority Registration |
| 23 | Thanksgiving Turkey Field Games |
| 25 | HOLIDAY (Thanksgiving Day) |
| 27 | SGA Leadership Training |
| 29 – Dec. 2 | ELI & Development Math Final Examination Continental Breakfast for Finals |

University of Oregon **SCHOLARSHIPS** FOR INTERNATIONAL STUDENTS

International Affairs, University of Oregon awards over one million dollars in scholarships to UO international students each year. Tuition, cash and work study

**GREAT
OPPORTUNITY!!**

Courtesy of Student Services Division
Counseling Services
Fall 2010

awards are available. Selection is based on financial need and academic merit.

- **International Cultural Service Program (ICSP):** ~30 new tuition scholarships ranging from \$6,000 - \$20,000. (*Cultural service requirement for recipients.*)
- **International Dean's Excellence Award (IDEA):** ~40 tuition scholarships ranging from \$4,000 - \$6,000. (*Awarded to new students only based on GPA. No application necessary.*)
- **International Affairs Endowed Scholarships:** ~20 cash scholarships ranging from \$1,000 - \$10,000. (*Some scholarships are country-specific.*)
- **International Student Work-Study Program:** ~80 work-study awards ranging from \$500-\$3,000. (*On-campus employment is required.*)

international.uoregon.edu/faid

Earliest scholarship deadline is February 15, 2011

International Affairs, 5209 University of Oregon, Eugene, OR 97403 • intl@uoregon.edu

ASCC Fall 2010~ENGLISH TUTORING @ SLAC office FRUSTRATED WITH WRITING PAPERS????

Come see us at the Student Learning Assistance Center room (SLAC, by the Cafeteria), and we can work together to help you with writing challenges during your semester at ASCC.

LET US HELP YOU WITH YOUR PAPERS! We offer:

- Continuous 1 on1 English writing tutorials;
- Newly renovated center with computer lab;
- Help with grammar/punctuation/vocabulary usage, Essay & Research writing, APA/MLA formats, citations/bibliography & writing structure;
- Help with other areas in collegiate English writing;
- Checklists for preparing your papers

Student Learning Assistance Center (SLAC by cafeteria)

Monday, Wednesday, Friday: 8:30am – 10:00am

Tuesday, Thursday: 8:30am – 12noon

*CALL SIA ACHICA @ 258-9430 / 699-9155 EXT. 461/347 (EMAIL: Sia at l.achica@amsamo.edu or siaachica@gmail.com)

COUNSELING SERVICES OFFICE: Located in the cafeteria

- **Student Transferability**

Prospective graduates of Summer & Fall 2010 must come in to see counselors at their offices located in the cafeteria for the following:



- **Fill out an Exit Counseling Survey**
- **Transferring to a 4-year college or university for assistance** with college search, filling out college applications, and retrieving college document checklists
- **Students seeking assistance in resume writing or job coaching**

*If you have any problems seeing any of the counselors in person, you can contact them via interoffice extensions or email: Matesina ext.

461 {m.willis@amsamo.edu}, Annie ext. 362 {a.panama@amsamo.edu}, Mary ext. 377 {m.taufetee@amsamo.edu}, or Mark ext. 326 {m.mageo@amsamo.edu}

- **Tutorial (FREE)**

- Students interested in getting tutored in any subject, please come see us at the Student Learning Assistance Center (SLAC) Office☺



Courtesy of Student Services Division
Counseling Services
Fall 2010

- All tutorials are free and appointments are made with Ms. Deidra Saelua, Mrs. Lydian Tinitali, or any of the available counselors at the SLAC or call ext. 461.
- ***Personal and Academic Counseling / Peer Counseling / YANA***
 - Students who have any personal issues such as: peer pressure, family issues, thoughts of suicide, relationship problems, dealing with emotional distress, and just need someone to talk to... please see the Personal Counselor- Mark Mageo or call 252-YANA (9262) or email: {yana@amsamoa.edu}
- ***Student Employment / VA Coordinator***

Please see or contact Mrs. Rosie Fualaau Lancaster for more information at the VA office behind the cafeteria. Email: f.lancaster@amsamoa.edu or call 699-9155 ext. 426.

Financial Aid

BATCH 8

FINAL BATCH BEFORE GRADES!!!

DEADLINE FOR ATTENDANCE FORMS

NOVEMBER 8TH BEFORE 2:00PM AFTER THIS DEADLINE THOSE THAT ARE ELIGIBLE FOR FINANCIAL AID and **HAVE NOT** TURNED IN ATTENDANCE FORMS WITH SIGNATURES **WILL BE BATCHED AFTER SEMESTER GRADES** HAVE BEEN POSTED.

REMINDER: The financial aid office will ONLY process financial aid for students that have the following:

- a. Complete Financial Aid application
- b. High School transcript (required only for students that have graduated after 1/1/05)
- c. Copies of the following documents **provided by Originals:**
 - i. High School diploma
 - ii. Local ID
 - iii. Birth Certificate and/or US Passport
 - iv. Social Security Card
- d. Attendance form (complete with signatures from instructors)

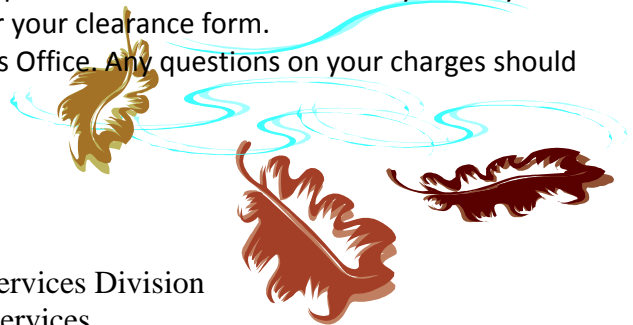
DOCUMENTS! DOCUMENTS! DOCUMENTS!

Have you been contacted by your counselors to turn in documents. If so, the sooner the better! Make an appointment to see your counselor to get your needed documents in.

WHAT BATCH NUMBER AM I ON?

You will be notified of your batch number either by email, mail, or come by our office with your student ID. Batch number release information will be posted on our Bulletin Board. If you see your batch number on board please see your counselor for your clearance form.

All batches will be released at 3pm at the Business Office. Any questions on your charges should be directed to the Business Office



ASCC Fall 2010 Tutorial Directory

| Divisions/ Departments/ Special Projects | Subjects | When? | Where? | Coordinator / Contact Person |
|---|--|--------------------------------------|---|---|
| Division of Student Services / (SLAC) | All courses as needed | Daily / Scheduled by Appointment | Student Learning Assistance Center (SLAC) | Deidra Saelua 699-9155 ext 461 d.saelua@amsamoa.edu |
| Art Department | Drawing; Designing; Painting; Photography; Pottery | Scheduled by Appointment | Art Department | Regina Meredith 699-9155 ext 360 r.meredith@amsamoa.edu |
| Business Department | Accounting; Financial Math; Business Plan | See Instructors/ Office Hours | Business Department | Faofua Faatoafe 699-9155 ext 319 faatoafe.faofua@amsamoa.edu |
| Community and Natural Resources (CNR) | AGR100 I & II; AGR197; AGR250; AGE150; AGR152; AGR297/MSC197; ANS150A; ANS150B; FAM250; FAM260; NRS180; NRS200; NRS250; NUT150 | Scheduled by Appointment | Community & Natural Resources Rm | Tavita Elisara 699-1575 t.elisara@amsamoa.edu |
| ELI / Student Support Services | English and Math Courses (ELI) | Daily: 8am-3pm | SSS Building (Old Library) | Lea Fotualii'i 699-9155 ext 423 l.fotualii@amsamoa.edu |
| GEAR UP Office | Math /Autodesk | MTWTh 3:30pm-5:00pm Oct.12-Dec.12 | TTD Lab Gear Up Office | Roy Fua 699-9166 r.fua@amsamoa.edu |
| Language and Literature Department | Writing; Reading; Interpretation; Research | Daily / Office hours | Instructor's Offices | Dr. Irene Helsham 699-9155 ext 320 i.helsham@amsamoa.edu |
| Math and Science Departments (LSAMP Program) | All Math and Science Courses | Daily / Scheduled by Appointment | SLAC & Chemistry Lab | Victor Ualesi 699-9155 ext356 v.ualesi@gmail.com |
| | | | | |

Courtesy of Student Services Division
Counseling Services
Fall 2010

| | | | | |
|------------------------------|--|--|---|--|
| Music Department | MUS161; MUS153; MUS296&L; MUS160 | Daily / Office hours | Instructor's Offices | Kuki Tuiasosopo 699-9155 ext450 k.tuiasosopo@amsamoa.edu |
| Nursing Department | Health (Nursing) | Scheduled by Appointment | See Instructors | Lele Ah Mu 699-1586 l.ahmu@amsamoa.edu |
| Samoan Studies Institute | All Samoan Courses | <u>Office Hours:</u> Scheduled by Appointment | Samoan Studies Institute (Office hours) | Hannacho Sione 699-9155 ext347 h.sione@amsamoa.edu |
| Teacher Education Department | English; History; Math; Speech; Science, etc | Scheduled by Appointment | (SLAC) Student Learning Assistance Center | Laura Purcell 699-9155 ext431 |
| Trades & Technology Division | Vocational Trades | Daily / Office hours | TTD Classrooms | Sal Poloai 699-9155 ext325 s.poloai@amsamoa.edu |
| Phi Theta Kappa Members | General Education Courses | TBA | SLAC Office | PTK President, Amber Fuaga 252-0531 tripleaaa4_dayz@yahoo.com |

WASC (Dr. Zacovic & Dr. Luallen), SGA members, with Dr. Kolhoff and Dr. Le'i during the WASC visit last week☺



BUSINESS OFFICE

* If you have any questions pertaining to your tuition payment, please see Moala Mago or Benjamin Ah Siu at the Business Office.

*After 1 week of holding on to checks, Business Office will mail out the student's checks to their existing addresses. **So please pick up your F/A checks ASAP.**

Credit & Collections

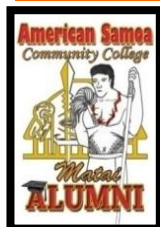
To all students with outstanding balances for the previous months, please make arrangements to get this matter resolved immediately. Your immediate response to this matter is greatly appreciated. Give us a call or stop by our office for any inquiries and/or payments. Vaesavali Ta'ala, ext.311 (v.taala@amsamoa.edu), Carmen Umi ext.383 (c.umi@amsamoa.edu)

CAMPUS SECURITY INFORMATION:

Business Hours: 699-9155 ext.305

After hours or before 7:30am: 699-6299

Meeting: TBA



Come on! Let's give back to our one and ONLY College on island and join our ASCC Alumni Association. We would love to have you. So when you're ready to join, please contact Amio Luvu: 699-1575 {amio1@yahoo.com}, Peteru LamYuen: 699-9155 ext.379 {p.lamyuen@amsamoa.edu}, Api Toleafoa: 699-9155 ext. 336 {a.toleafoa@amsamoa.edu}, or Matesina Willis: 699-9155 ext.461 {m.willis@amsamoa.edu}, for more information. Hope to see you there!☺

Notice: For all 2010 Summer & Fall Graduates, please fill out an "Graduate Exit Survey form" with the ASCC Alumni Counselor, Ms. Matesina Willis.

Where? Student Learning Assistance Center (SLAC) located at the old Book Store before entering the cafeteria.

REMINDER: ZERO TOLERANCE POLICY

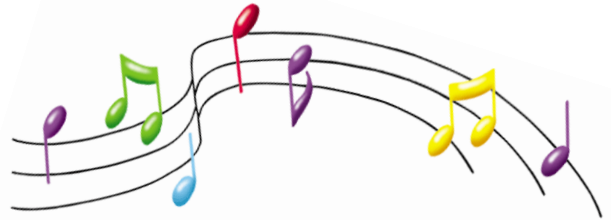
Students! Please know and understand that this policy is very crucial.

If you have any questions regarding this policy, please refer to the ASCC Catalog (hard copy or ASCC Website), or see the Dean of Student Services.

Music Students

November 9, 23, 2010

*ASCC Stage Band Concert - ASCC Amphitheater
Gospel / Jazz / Pop / Rock*



November 14, 2010

ASCC Concert Choir Service Learning - EFKAS Vatia Church (Rev. Uta'i) @ 9:00am

November 28, 2010

ASCC Concert Choir Service Learning - Alofa Tunoa Church (Rev. Tavai) - Puapua @ 11:30am

November (4th week)

Faculty Organ Recital (NPPouesi) & ASCC Concert Choir - Fatuoauga

December (1st week)

ASCC Christmas Performance - Fagatogo Malae (ASG Annual Christmas Program)

Faculty & Administration Combined Choir

December (2nd week)

ASCC Concert Choir - Fagatogo Malae (Arts Council Christmas Program)

December (3rd week)

ASCC Concert Choir Recording

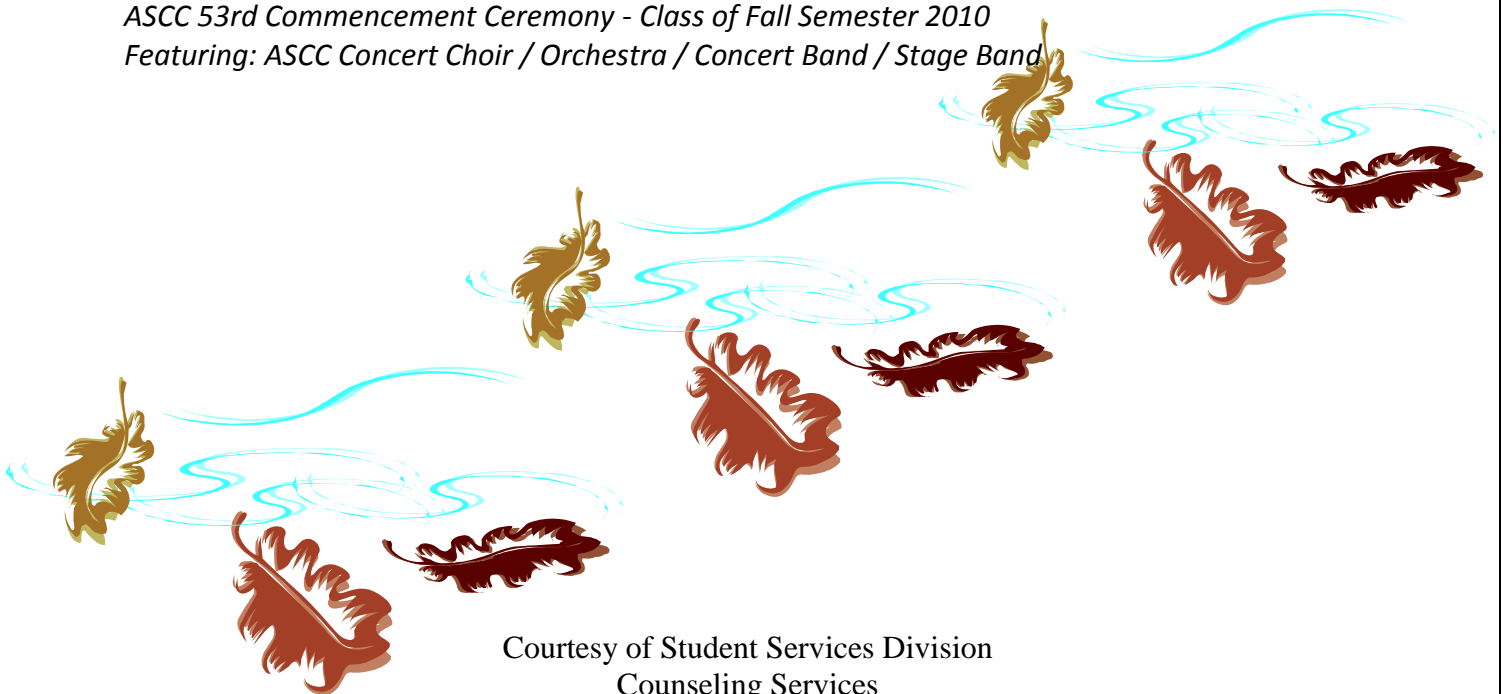
December 14, 2010

Piano Recital (Students & Faculty)

December 17, 2010

ASCC 53rd Commencement Ceremony - Class of Fall Semester 2010

Featuring: ASCC Concert Choir / Orchestra / Concert Band / Stage Band



Courtesy of Student Services Division
Counseling Services
Fall 2010



EAST · WEST CENTER
COLLABORATION · EXPERTISE · LEADERSHIP



Fellowships for 2011-2012

Asia Pacific Leadership Program

New Fellowships Available

The East-West Center is pleased to announce new fellowships for the Asia Pacific Leadership Program for 2011 - 2012. Currently celebrating its 10th anniversary, the Asia Pacific Leadership Program (APLP) is the center of excellence for leadership education in the Asia Pacific region and a signature program of the East-West Center.

The APLP is a graduate certificate program combining the development of regional expertise with the enhancement of individual leadership capacity. Based at the East-West Center in Honolulu, Hawaii, the program has created a network of dynamic leaders in 52 countries who are helping to build a peaceful, prosperous and just Asia Pacific community. Upon acceptance, all participants receive a fellowship valued at approximately \$15,000 USD.

Program Goals

The Asia Pacific Leadership Program seeks outstanding individuals with proven leadership experience from across the Asia Pacific region, the United States and beyond. APLP Fellows come from all walks of life, including areas as diverse as government, business, NGOs, health sciences, media, monastic orders, and education.

Through participation in the APLP, Fellows will:

- Explore a diverse range of leadership techniques and tools
- Analyze personal leadership strengths and weaknesses
- Forge deeper intercultural communication skills and join a lifelong learning community at the East-West Center
- Grasp and be able to communicate implications of regional and global trends
- Develop enhanced abilities to navigate regional and personal change

APLP participants become knowledgeable about the critical challenges facing the Asia Pacific region, gain broad regional perspectives, and are trained to exercise leadership and promote cooperation amidst global transition.

A wide range of supplemental scholarships are available.

Application and Eligibility Details

For more information about the Asia Pacific Leadership Program, as well as eligibility requirements and application forms, please visit our website at: www.eastwestcenter.org/aplp or contact us at: aplp@eastwestcenter.org.

The APLP was established through generous funding support from the Freeman Foundation.

**Recruitment for
2011-2012 is open.**

Places are limited.

**Applications are accepted
on a rolling basis.**

Deadline:

December 1, 2010

**Location:
Honolulu, Hawaii**

More information:

www.eastwestcenter.org/aplp

Courtesy of Student Services Division
Counseling Services
Fall 2010